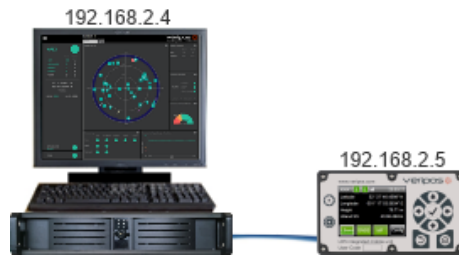


Interface the LD5 via direct Ethernet to Quantum on a Windows 7 or Windows 10 (64 bit) PC that meets the following minimum requirements:

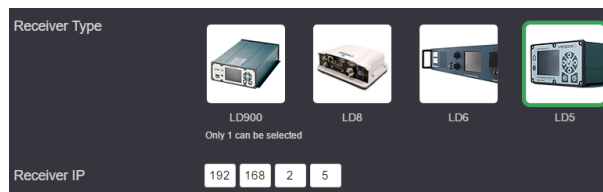
Processor: i5 (2 nd Gen+) @ 3.2GHz	Memory: 3GB
Hard Drive: 250GB	Display: 1280 x 1024 resolution

The Windows PC must be on the same network as the LD5. To find and change the LD5 network settings, from the home screen, navigate to **Config > Network**.



Quantum and LD5 on the same subnet

If this is a new installation, launch Quantum and click on a tile containing **New**. If this is not a new software installation, launch Quantum and navigate to **Settings > System Configuration > New**. On the **New Configuration Wizard: Receiver Configuration** page the Receiver Type **LD5** can be selected, and IP entered:

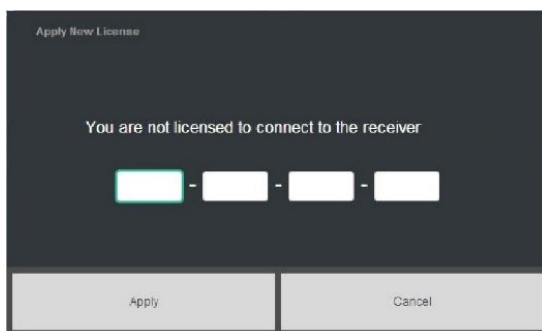


Receiver Type and Receiver IP Options

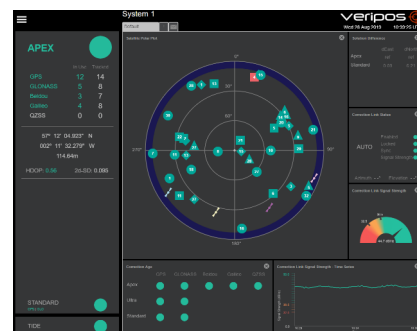
Click **Next** found at the bottom of the screen. The **New Configuration: Licensing** page will load, allowing a license to be added if necessary. VERIPOS provide Quantum licenses for two modes, **DP** or **Survey**. Quantum can be supplemented further with additional **Heading** and **Tides** features. Licenses or features can be purchased or rented, such as purchasing a DP license with a rented Heading option. Once the rental license expires, the Heading displays will terminate, but the core DP functionality will continue to function.

Quantum licenses and features can be purchased or rented by contacting the VERIPOS Helpdesk. When contacting the helpdesk (helpdesk@veripos.com), specify which modes/features are required, quote the unit User Code of the LD5, the vessel name, company and your unique SAL. After entering the LD5 license, click **Next**.

On the **New Configuration: Save Configuration** page, enter a **Config Name**. It is good practice to create an informative name for a configuration, such as a vessel name and the date or the name of a specific project. After entering this, click **Save & Launch**.



Quantum license prompt



Quantum display post-configuration

For further guidance, refer to the [Quantum User Manual](#), or raise a request for technical support via the [VERIPOS Support Portal](#) or an email to support.veripos@hexagon.com.