



FlexPak6™

QUICK START GUIDE

GM-14915106

Rev 3

October 2016

This guide provides the basic information needed to set up and use your new FlexPak6. For more detailed information on the installation and operation of your receiver, go to our web site and download the OEM6 Installation and Operation user manual at www.novatel.com/support/info/view/gnss-receivers.



If you purchased a SPAN® GNSS+INS capable FlexPak6, download the [SPAN on OEM6 Quick Start Guide](#).

If you wish to add SPAN functionality to your FlexPak6, contact your NovAtel Sales representative or Sales@NovAtel.com to purchase SPAN.

BOX CONTENTS

In addition to this *Quick Start Guide*, the following is provided with your FlexPak6:

- 1 power adapter cable
- 1 null modem serial cable
- 1 USB cable
- 1 I/O cable

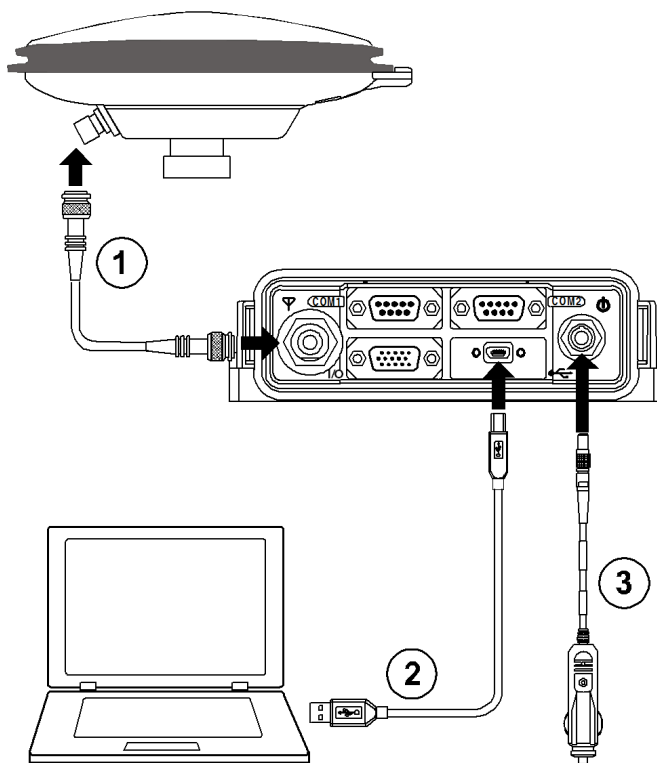
ADDITIONAL EQUIPMENT REQUIRED




The additional equipment listed below is required for a typical setup:

- A Windows based computer with an RS-232 DB-9 or USB port
- A standard 12 VDC power outlet or a 6-36 VDC power supply capable of at least 5 W
- A quality GNSS antenna, such as one from NovAtel's VEXXIS™ or Compact antenna series. Contact your NovAtel Sales representative or Sales@NovAtel.com for a full range of options
- An antenna cable with a TNC male connector at the receiver end, such as NovAtel's GPS-C016 model

SETTING UP YOUR FLEXPAK6

Complete the following steps to connect and power your FlexPak6. Be sure to mount the antenna to a secure, stable structure with an unobstructed view of the sky.



1. Using a coaxial cable, connect the antenna to the  port, which is found on the front face of the FlexPak6.
2. Connect the *USB* or *COM1* port on the receiver to the USB or serial port on your computer. If you are using a USB connection, install the USB drivers available from our web site at to www.novatel.com/support/info/view/firmware-options.
3. Connect the power cable connector to the  port. Line up the red mark on the power cable connector with the red mark on the receiver's  port and insert power cable.


Alternative Power Source

If you use an alternative power source, the 12 V car adapter can be cut off from the power cable. The exposed wires can then be tied to a 6-36 VDC power supply capable of at least 5 W.

Since the 12 V car adapter on the supplied adapter cable incorporates a 6 A fuse, a user supplied 6 A slow blow fuse in a suitable holder must be used at the alternate power source to protect both the power supply and your warranty. The car adapter is not recommended for use if your power source is greater than 12 V.

For an alternative power source:

- a) Cut the 12 V car adapter from the power cable.
- b) Tie the exposed wires to a 6-36 VDC supply capable of at least 5 W.

 Be sure to connect the red and orange or green wires to the positive side of supply and connect the black and brown or white wires to the negative side of supply.

- c) Use a user supplied 6 A slow blow fuse at the alternate power source to protect the power supply wiring and your warranty.

Fuse/Holder Recommendations

12 V System

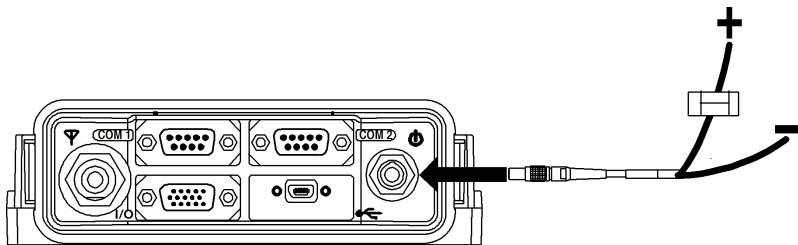
BK/MDL-6-R Fuse (or equivalent)

BK/MDA-6-R Fuse (or equivalent)


Holders

BK/HFA-R-R Fuse (or equivalent)

Note: All made by Cooper/Bussmann; available from Digikey




4. Plug in the adapter and/or turn on the power supply. The power LED will be red when the FlexPak6 is properly powered.

 Be aware that the FlexPak6 provides an output voltage on pin 4 of COM2 (POUT). This output voltage is at the same level as the power source that you use to power the FlexPak6. To ensure that any equipment you connect to COM2 will not be damaged, refer to the COM2 pinout in the *OEM6 Installation and Operation Guide* found on our Web site at www.novatel.com/support/info/view/gnss-receivers.

The Ethernet ports are safety extra-low voltage (SELV) circuits only and are suitable for connection within a building only. Do not connect them to Telephone Network Voltage (TNV) circuits.

NOVATEL CONNECT

Once installed, **NovAtel Connect** provides a graphical interface to establish communication, control and monitor the operation of your NovAtel receiver.

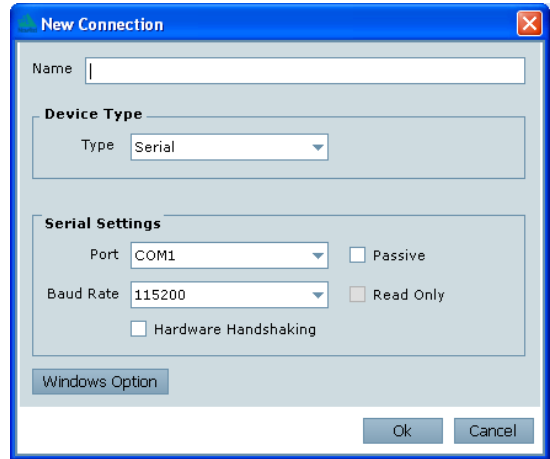
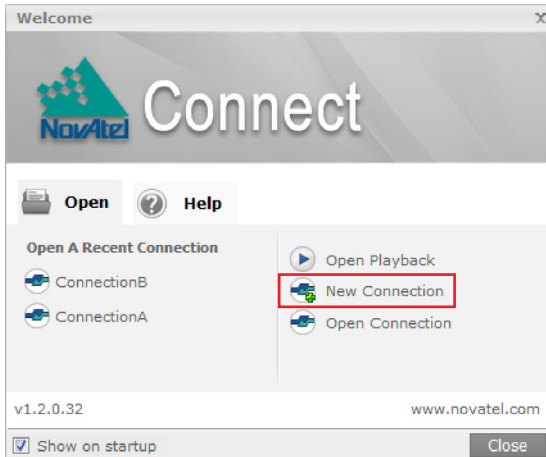
 To access and download the most current version of NovAtel Connect, go to www.novatel.com/support/info/view/firmware-options.

Establishing a New Receiver Connection


The first time you open a serial port to communicate with the receiver, complete the following:

1. Launch **NovAtel Connect** from the *Start* menu folder specified during the installation process. The default location is *Start | All Programs | NovAtel PC Software | NovAtel Connect*.

2. Select *New Connection* from the Welcome window.



3. Enter a name for the Connection.
4. Select the Device Type to use to communicate from the drop list:
 - Serial - define the COM port and connection settings
 - USB - define the COM port and connection settings
 - Network - select a receiver and define network settings
5. Click the *OK* button to save the new connection.

 Detailed instructions for using **NovAtel Connect** are available from within the utility Help. For serial connections, the default baud rate of 115200 is preferred and there is no handshaking.

QUESTIONS OR COMMENTS

If you have any questions or comments regarding your FlexPak6, please contact NovAtel using one of these methods:

Log a Case and Search Knowledge:

Website: www.novatel.com/support

Log a Case, Search Knowledge and View Your Case History: (login access required)

Web Portal: <https://novatelsupport.force.com/community/login>

E-mail:

support@novatel.com

Telephone:

U.S. and Canada: 1-800-NOVATEL (1-800-668-2835)

International: +1-403-295-4900

Quick Start Guide - FlexPak6

NovAtel, OEM6 and SPAN are registered trademarks of NovAtel Inc.
FlexPak6, NovAtel Connect and VEXXIS are trademarks of NovAtel Inc.
All other brand names are trademarks of their respective holders.

©Copyright 2016 NovAtel Inc. All rights reserved.

Printed in Canada on recycled paper. Recyclable.

Unpublished rights reserved under international copyright laws.

