

Leica Geosystems Release Notes

Product Leica TruView 2021.0.1
Date 15 July 2021
From HDS Software Product Management

Contents

Contents

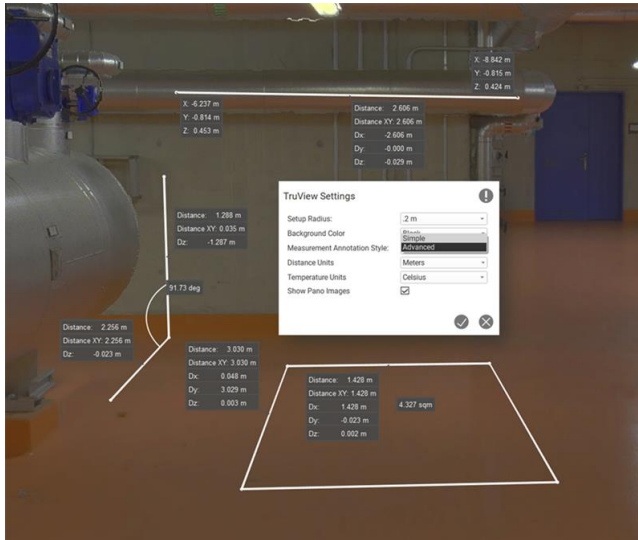
What's New	3
Dx, Dy and Dz added to measurement labels	3
Leica JetStream Viewer Compatibility and Upgrades	3
Compatibility with TruView 2021.0.1 and JetStream Enterprise server	3
Compatibility with TruView 2021.0.1 and Cyclone ENTERPRISE server	3
Model Compatibility.....	3
Disconnected Mode	3
Portable Mode	4
Deprecated Features.....	4
Known Issues	4
Measurements picking ignores the active limit-boxes	4
Model rotation rings clipped by clip boxes	4
Model resizing	4

What's New

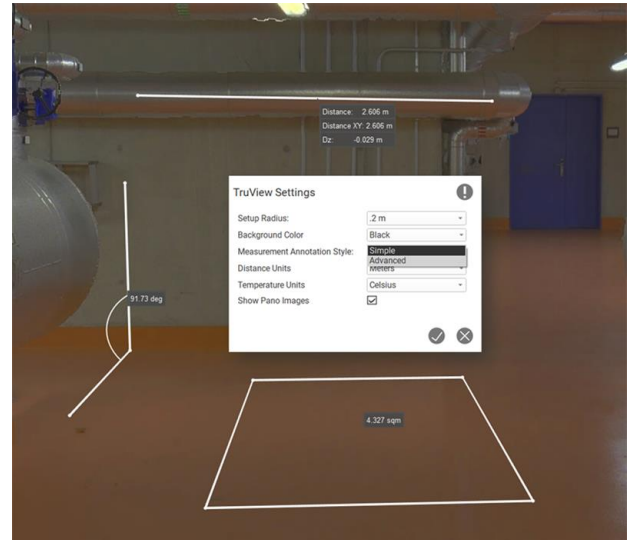
This is a minor release including a UX change to the measurement functions within TruView.

Dx, Dy and Dz added to measurement labels

With this release the Dx and Dy measurements are now displayed when viewing a measurement in advanced mode. Only Dz appears in simple mode.



Advanced measurement mode displays individual point delta values in addition to the linear distance.



Simple measurement mode retains its un-cluttered display.

Leica JetStream Viewer Compatibility and Upgrades

Compatibility with TruView 2021.0.1 and JetStream Enterprise server

TruView 2021.0.1 requires JetStream Enterprise 1.6 and newer for connected mode to access all features. TruView 2021.0.1 is compatible JetStream Enterprise 1.3 and newer, however non-synchronous versions will result in a limited toolset.

Compatibility with TruView 2021.0.1 and Cyclone ENTERPRISE server

TruView 2021.0.1 requires Cyclone ENTERPRISE 2021.0.0 and newer for connected mode to access all features.

Model Compatibility

TruView 2021.0.1 supports models in LGS files and Cyclone ENTERPRISE projects. LGS files and Cyclone ENTERPRISE projects must be published from Cyclone 2020.1 or later, Cyclone REGISTER 360 (including BLK Edition) 2020.1 or later or JetStream Enterprise 2020.1 or later (for LGS files only) and published with a Cyclone PUBLISHER Pro license (for JetStream Enterprise projects published out as an LGS for model support, this means the project must have been originally published with a Cyclone PUBLISHER Pro license).

Disconnected Mode

TruView 2021.0.1 can be installed and used without connecting to a JetStream Enterprise or Cyclone ENTERPRISE server. The free, stand-alone Viewer can open/read JetStream Viewer (JSV) files as well as LGS files. LGS files are exported from the JetStream Enterprise admin utility, Cyclone ENTERPRISE or from the Cyclone REGISTER family.

The disconnected mode, when viewing JSV files, does not support access to saved User Coordinate Systems (UCS) nor saved limit boxes, slices, and clips. This project information is stored in and managed by JetStream Enterprise, Cyclone ENTERPRISE or available in an LGS file.

Portable Mode

TruView 2021.0.1 Portable is a free, no-install version of the Viewer that can be packaged on a thumb drive and run from any PC, no network or Wi-Fi access required. Leverage most of the TruView's capabilities (all the same capabilities as the Disconnected Mode) in a go-anywhere package that can be navigated by even the most inexperienced point cloud user. Perfect for sharing data with organizations with IT hurdles for new software or as a marketing tool for prospective customers. The free viewer can read LGS files written from Cyclone, the Cyclone REGISTER 360 family, JetStream Enterprise or Cyclone ENTERPRISE projects and JSV files created before March 2020.

Deprecated Features

Leica Geosystems strives to provide support for the widest array of operating systems and file formats possible as is reasonable given current technologies and support from third-party partners. With each release, we review our list of currently supported formats and operating systems in line with industry trends and announced product terminations.

Leica Geosystems may add or terminate support for a file format during any release. Obsolete operating systems will be supported for six months after their announced termination or the next major software release, whichever comes first. Server products will be supported in alignment with Leica's Client License Manager (CLM) supported servers to guard users against incompatibility.

TruView 2021:

- Windows 7 is no longer supported.

Known Issues

Incorrect Clip Box behavior

Measurements picking ignores the active limit-boxes

When using measurement tools, users can select points which are not visible due to clipping. This extends to both temporary Clip Boxes and Limit Boxes published as Clips from upstream.

Model rotation rings clipped by clip boxes

When rotating a model, the rotation rings will obey an active clip thus being cut off when a temporary Clip Box or upstream Clip is active.

Model resizing

A previously scaled model may return to its original (as imported) scale upon being moved with the Align to Point function.