

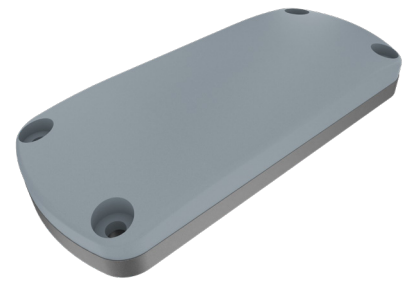
# S5GIRXX16RR-XP-XXX-X series antenna

## GPS and Iridium antenna

The S5GIRXX16RR-XP-XXX-X series can receive L1 or L1/L2 GPS + Iridium signals. There are four mounting holes located outside an o-ring seal on the antenna for easy installation onto platforms with tight size and weight budgets. Separate GPS and Iridium connectors are provided.

The GPS channel is offered in passive and active (amplified) configurations. The active configuration offers 2-stage integrated bandpass filtering for high out-of-band rejection and limiter diodes to protect sensitive receiver electronics. The passive configuration is best suited to applications where the antenna is located close to the GPS receiver and offers the lowest insertion loss to minimize your system's noise figure. The Iridium channel is passive (non-amplified).

Antcom can customize this product family to meet your specific requirements. Please contact us for more information about customization options.



### Features

- Separate GPS and Iridium connectors
- Mounting screws, washers and o-ring included
- Passive and active GPS options available
- Connector options available
- Paint color options available

### Part number decoder

## S5GIRXX16RR-XP-XXX-X

#### GPS Signals

15 = L1  
12 = L1/L2

#### LNA Gain

AV = 33 dB  
P = Passive

#### Iridium

P = Passive

#### Color (per AMS-STD-595)

1 = Gloss White #17925  
2 = Lusterless Gray #36320  
3 = Camo Green #34094  
4 = Lusterless Black #37038  
5 = Desert Tan #33446

#### Iridium Connector

N = Type N  
S = SMA  
T = TNC

#### GPS Connector

M = MCX  
N = Type N  
S = SMA  
T = TNC  
TB = TNC bulkhead

### Benefits

- Multi-functional antenna includes GPS plus Iridium for size and weight savings
- Easy installation with only one set of mounting holes and one cable clearance hole

## Electrical

### Frequency range

GPS L1	1575.42 ±12 MHz
GPS L2 (optional)	1227.60 ±12 MHz
Iridium	1616 – 1625.5 MHz

### VSWR

&lt;2.0:1

### Impedance

50 ohms

### Polarization

RHCP

## Mechanical and environmental

### Weight (typical)

GPS L1 + Iridium	8.4 oz (238 g)
GPS L1/L2 + Iridium	9.1 oz (258 g)

### Temperature

-55°C to +85°C

### Altitude

70,000 ft

### Random vibration

>30 G<sub>rms</sub>

## Typical LNA performance

### LNA gain

AV option	33 dB
P option	Passive

### LNA noise figure (typical)

4 dB

### LNA P1dB out

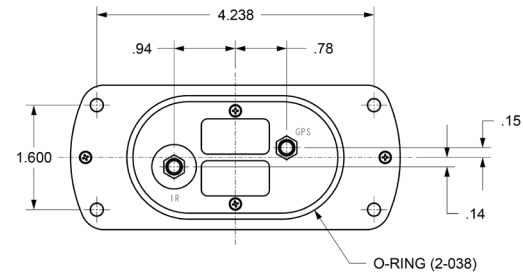
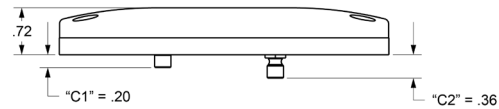
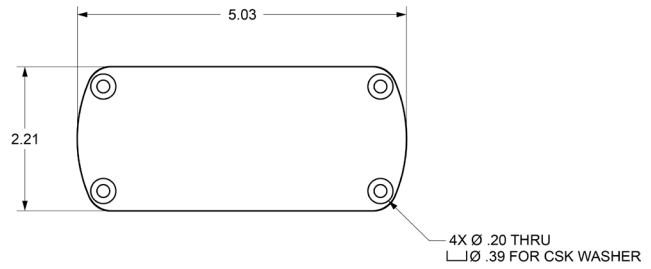
GPS L1 + Iridium	10 dBm
GPS L1/L2 + Iridium	8 dBm

### Input power

+2.7 to +15.0 VDC  
<40 mA

### Power handling

GPS	1 Watt CW
Iridium	30 Watt CW



## Contact Hexagon | Antcom

sales.ant.ap@antcom.com Phone: 1-310-782-1076 | Fax: 1-310-782-1086

For the most recent details of this product: antcom.com

*This document and the information contained herein are provided AS IS and without any representation or warranty of any kind. All warranties, express or implied, are hereby disclaimed, including but not limited to any warranties of merchantability, non-infringement, and fitness for a particular purpose. Nothing herein constitutes a binding obligation. The information contained herein is subject to change without notice. Antcom is a trademark of Hexagon AB and/or its subsidiaries and affiliates, and/or their licensors. All other trademarks are properties of their respective owners.*

© Copyright 2025 Hexagon AB and/or its subsidiaries and affiliates. All rights reserved. A list of entities within the Hexagon Autonomy & Positioning division is available at <https://hexagon.com/company/divisions/autonomy-and-positioning>.