

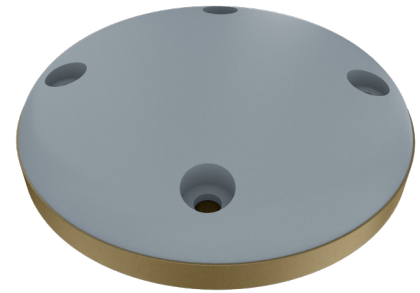
G5Ant-3XXX series antenna

Penta-band GNSS FRPA

The G5Ant-3XXX product family is a small-footprint, multi-frequency antenna that provides assured Global Navigation Satellite Signal (GNSS) signal reception. The Antcom “G5” antenna operates in five frequency bands and includes support for GPS L1, GPS L2, GLONASS L1, GLONASS L2 and L-Band. These antennas include the standard “Fixed Reception Pattern Antenna” (FRPA) mounting footprint for easy integration onto new and existing platforms. The rugged enclosure can withstand harsh environmental conditions seen in military, aerospace and other applications.

The product family is available in passive and active (amplified) configurations. The active configurations offer 2-stage integrated bandpass filtering for high out-of-band rejection and limiter diodes to protect sensitive receiver electronics. The passive configurations are best suited to applications where the antenna is located close to the GNSS receiver and offers the lowest insertion loss to minimize the noise figure of your system.

Antcom can customize this product family to meet your specific requirements. Please contact us for more information about customization options.



Features

- Multi-frequency, multi-constellation for assured GNSS reception
- FRPA footprint with thru-hole mount or bottom-mount
- Passive or active (amplified) configurations available
- Active configurations offer 2-stage integrated bandpass filtering with diode limiters
- Connector options available
- Paint color options available

Benefits

- Standard FRPA mounting footprint for easy platform integration
- Many standard options available and customizable if required

G5Ant-3XXX

LNA Gain
 A = 33 dB
 A4 = 40 dB
 P = Passive

Color (per AMS-STD-595)
 1 = Gloss White #17925
 2 = Lusterless Gray #36320
 3 = Camo Green #34094
 4 = Lusterless Black #37038
 5 = Desert Tan #33446

Connector
 S = SMA
 M = MCX
 MM = MMCX
 T = TNC
 TB = TNC bulkhead
 B = BNC
 N = Type N
 NB = Type N bulkhead

Electrical

Frequency range

GPS L1	1575.42 ± 15 MHz
GPS L2	1227.60 ± 12 MHz
GLONASS L1	1609 ± 7.0 MHz
GLONASS L2	1242 – 1249 MHz
Galileo E1	1575.42 ± 17 MHz
BeiDou B1	1561.098 ± 10 MHz
L-Band	1545 – 1610 MHz

VSWR

<2.0:1

Impedance

50 ohms

Polarization

RHCP

Mechanical and environmental

Weight (typical)

9.3 oz (264 g)

Temperature

-55°C to +85°C

Altitude

70,000 ft

Random vibration

>30 G_{rms}

Typical LNA performance

LNA gain

A option	33 dB
A4 option	40 dB
P option	Passive

LNA noise figure

3.5 dB

LNA P1dB out

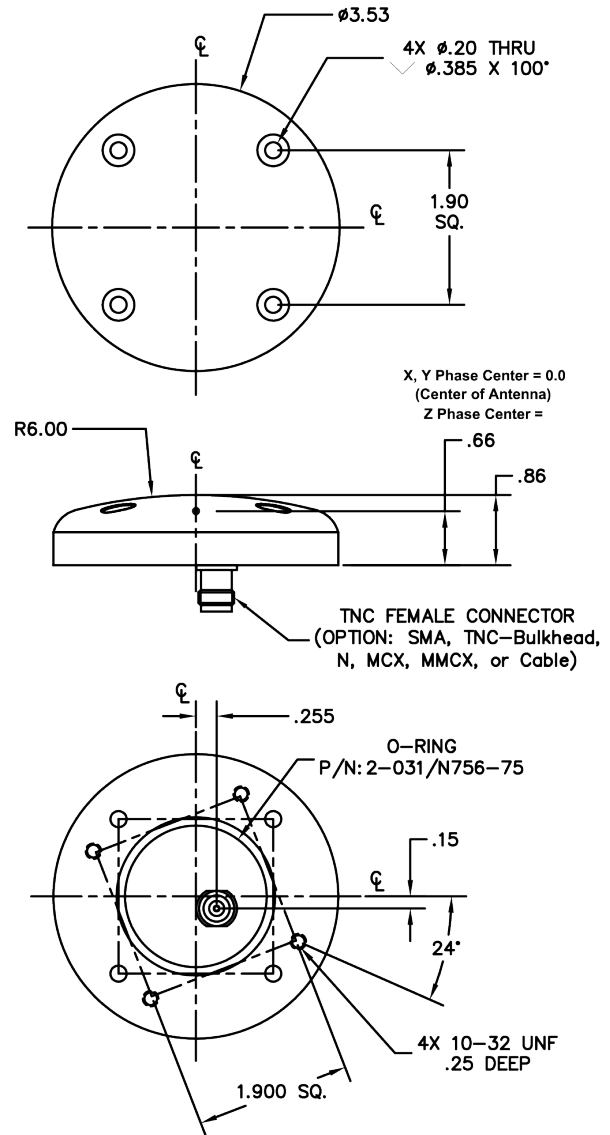
+13 dBm

Input power

+3.8 to +15.0 VDC
<70 mA

Power handling

1 Watt CW



Contact Hexagon | Antcom

sales.ant.ap@antcom.com Phone: 1-310-782-1076 | Fax: 1-310-782-1086

For the most recent details of this product: antcom.com

This document and the information contained herein are provided AS IS and without any representation or warranty of any kind. All warranties, express or implied, are hereby disclaimed, including but not limited to any warranties of merchantability, non-infringement, and fitness for a particular purpose. Nothing herein constitutes a binding obligation. The information contained herein is subject to change without notice.

Antcom is a trademark of Hexagon AB and/or its subsidiaries and affiliates, and/or their licensors. All other trademarks are properties of their respective owners.

© Copyright 2025 Hexagon AB and/or its subsidiaries and affiliates. All rights reserved. A list of entities within the Hexagon Autonomy & Positioning division is available at <https://hexagon.com/company/divisions/autonomy-and-positioning>.